



ST ANNE'S

CATHOLIC SCHOOL

Ph: (03) 384 3073
Em: reception@stannes.co.nz
www.stannes.co.nz
Principal : Dallas Wichman

NEWSLETTER
14 September 2016

Better Funding, Better Learning

As you know, last week, the staff at St Anne's attended a meeting in order to understand what the Government means by 'Global Funding'. We are really concerned that Global or Bulk Funding schools and a freeze on education spending will lead to principals having to decide between employing teachers and employing teacher aides, support staff, paying power bills, buying equipment etc. At present, the number of teachers in a school is funded by the government based on pupil numbers and agreed pupil:teacher ratios. This will disappear with Global Funding and we are concerned about :

- Fewer teachers and larger classes
- No consistent pupil:teacher ratios for year levels
- Fewer hours for teacher aides and support staff
- More complex financial work for boards of trustees where principals will be forced to make decisions about staffing based purely on dollars.

If you agree with the teacher's concerns you can add your support to stop the funding freeze by signing the petition available online: <http://www.nzei.org.nz/NZEI/Home> and the red link '*click here to sign the petition and stop the funding freeze.*'

Sport

Thank you to the parents and children who have returned their forms and payment to enter the Bromley Touch Competition. Although we have had a good response we still need a few more players for the Yr 5/6 and Yr 7/8 teams as well as coaches and managers for all teams.

As this competition is run outside of school hours we **must** have your help or we can't enter teams. Teachers will help by having practices at school, and coaches are welcome to take practice during lunchtime, after school etc. Can you help? Then return the form on the back to school by 9am Friday, 16 Sept.

God Bless

Dallas Wichman, Principal

**ST ANNE'S
CATHOLIC SCHOOL**

**Spring
fair**

739 Ferry Road, Woolston
Sunday 18th September 2016
11.30am - 2.00pm

It is not too late to offer help at the Spring Fair just add your name to the roster in the foyer or ring the office.

COMING EVENTS

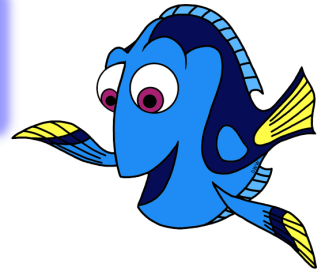
September

12-17 Social Justice Week
15 Rm 3 Orana Park
16 Assembly Rm 1 9am
18 School Spring Fair
21 9.15am Mass Rm 1
23 Assembly Rm 2 9am
End of Term

October

10 Term 4 starts 9am
18 Parents & Friends meeting 7pm

Special Character



Last Sunday the Gospel reading was based around the Parables of **The Lost Sheep** and **The Lost Coin**. Room 2 students summed up the message of these parables: God will never give up on us!

We then had a discussion about the characters in the movie "Finding Dory".

If ever there was a character you would "give up" on, it would be Dory. She had a major disability - no short term memory - and that made finding her parents a huge challenge. When she was finally re-united with them, there they were, still collecting shells and making pathways so Dory could find her way back home.

They never gave up.

There are a lot of examples of GRIT in this movie - Gospel values, taking responsibility for yourself, tons of initiative and heaps of teamwork. All qualities we aspire to and encourage here, at St Anne's.

ALTAR SERVERS—At the end of this year our Yr 8 altar servers will be leaving our school and possibly their Altar Serving tasks. They are very welcome to continue as Altar Servers and some do after starting high school – they need to let me know if they want to continue. That means we will be looking to start new Servers to carry on the great tradition. Any child who has made their First Communion can become an Altar Server. It is a privileged role helping Father with the Mass. There are forms to fill in for Altar Serving at the back of St Anne's Church or you can collect one from Jean at the church office. We have a short meeting after school about twice a term, and new servers serve with senior servers till they know what to do. We would love you to join our group of servers who are doing a great job and we're very proud of them.

God bless, **Mary Stott** - Co-ordinator 027 381 3006 or mary.stott@xtra.co.nz

Bromley Touch Competition - Return by 9am Friday 16 Sept

We are gauging interest in the upcoming summer Bromley Touch competitions. As they are out of school time please be aware parents are needed to organise transport to and from the venue and a coach and team manager are also required for a team to be entered.

Touch will take place on Tuesday afternoons. The cost to play for the season will be approximately \$15. We will accept the first 9 people to return the slip below with payment for each age group (yr 3/4, yr 5/6 and yr 7/8). I feel anymore than 9 will cause too much 'waiting' on the sideline by all players. If a parent/caregiver offers to help in the running of the team their child will get preferential entry.

We aim to provide trainings at school but if the coach could make a weekly time to run a session, this would be ideal.

Please bring in the attached sheet by Friday 9 September 2016.

Thank you

Dallas Wichman/Bridget Bruorton



_____ Rm___ would like to play in the **Bromley Touch competition**. (\$15 attached)

I understand it is my responsibility to organise transport to and from the venue and supervision of my child. I also understand that my child and any who support them represent the school and the values it holds. Both my child and I agree to promote respect, honesty and care of all of those present. I understand and support that, at the discretion of the school, my child will be withdrawn from the competition if the above is not adhered to.

Parent/Caregiver signature Student signature

I can help with being in charge of the team during the games (coach/team manager-organising substitutions, training etc.)

Yes / No

Details:

If yes, name of helper:_____ Contact number of helper:_____

E-mail of helper:_____